

F 334

.M7 M64













# KING'S BOOKLETS

A Thousand & One

World Wide Subjects



COPYRIGHT 1902

NEW YORK, U.S.A.

*A City of Electric Progress*

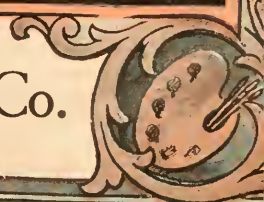
# Montgomery

*Capital of ALABAMA* *"The Cotton Plantation State"*

COMPLIMENTS OF

## Montgomery Light & Water Power Co.

MONTGOMERY, ALABAMA



# Montgomery, City of Remarkable Resources

Text by WILLIAM WIRT MILLS

WITH vast coal and iron fields immediately to the north, with great forests of yellow pine just to the south, Montgomery has yet another natural advantage in being situated in the famous Black Belt, a strip fifty miles wide, with a rich, dark soil, the most fertile in the world.

With its seven railroads and its waterways, Montgomery can assemble the raw materials for manufactures so cheaply that the city can produce many lines of merchandise more economically than any other manufacturing centre, and the wonderful productiveness of the soil results in Montgomery supplying to the North immense quantities of grain, fruit and vegetables.

Besides, it is one of the chief cotton marts of the world, with an annual business of about 200,000 bales, the city's trade in cotton and cotton seed exceeding \$11,000,000 a year, nearly a quarter of this output being from plantations so close to the city that the cotton is brought in by wagons.

Low freight rates and unexcelled transportation facilities are supplemented by another advantage: the harnessing of the Tallassee River affording Montgomery cheaper light and power than any other city enjoys, giving the small manufacturer an opportunity to produce merchandise quite as cheaply as larger concerns.

These factors have combined to give Montgomery an annual commerce of more than \$40,000,000, its wholesale grocery business alone having a value of \$11,500,000; provisions, \$3,500,000; dry goods, \$4,500,000; boots and shoes, \$1,180,000; hardware and machinery, \$4,485,000; vehicles, \$1,300,000.

There are 1,393 commercial and manufacturing establishments in the city, employing 12,500 hands, the wages aggregating \$9,000,000 a year, with prospects of many more in the future.

The city is the trade centre of a population of over 1,000,000, but its products, particularly its cotton, groceries and provisions, go far beyond this region into the great markets of the North.

Montgomery is peculiarly a city of opportunity, where the man of little capital has a fair chance to start a business in a small way and develop it steadily and profitably.

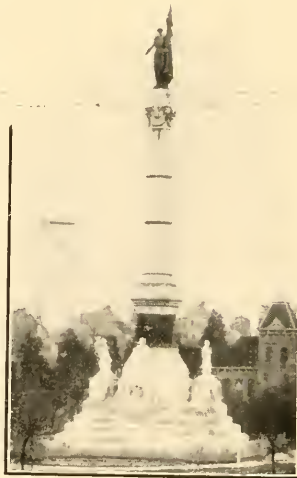
Montgomery County last year produced 54,000 bales of cotton of a value of \$2,700,000; \$864,000 worth of cotton seed; 850,000 bushels of corn, 615,000 bushels of sweet potatoes, 156,000 bushels of white potatoes, 21,746 tons of hay, 12,350 bushels of peanuts, 162,132 head of poultry, 212,226 dozen eggs, over 4,000 quarts of milk a day, the total value of the county's farm products being \$7,306,645.

In one establishment 10,000 pounds of coffee are roasted daily; in another 10,000 pounds of stick candy are made each working day; one cane syrup company sends its products into eighteen states; four fertilizer manufactories produce 125,000 tons, worth \$2,500,000.

The city is successfully engaged in 163 lines of manufactures, yet some of its natural resources in the way of raw materials have hardly been touched. Close to the city are vast deposits from which high-grade cements can be manufactured profitably. Some of the finest plastic clays in the country are found in the neighborhood. Besides the great forests of yellow pine, there are enormous

quantities of the finest hard woods within easy reach of the city.

Big as are Montgomery's industrial, agricultural and commercial statistics, they are but indications of far greater business that can be done when its opportunities are more fully developed, when more capital is employed in the development, and working forces multiplied.

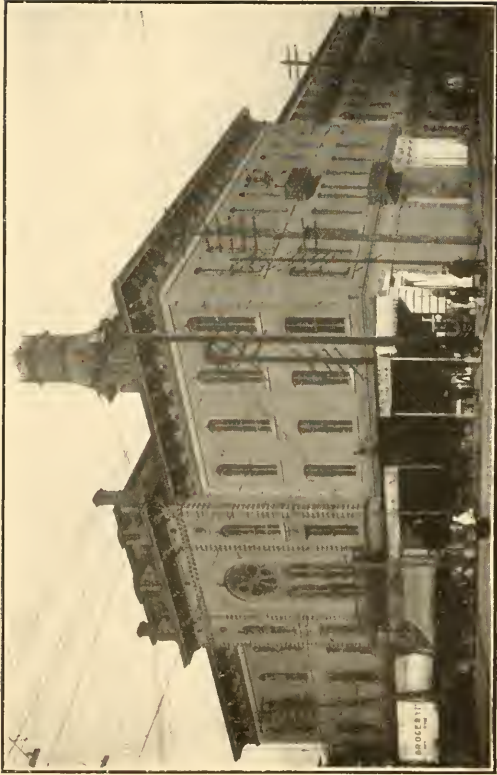


CONFEDERATE MONUMENT,  
Capitol grounds; by women of Alabama





**CAPITOL OF ALABAMA**, 18th state in Union, 2,000,000 population, 52,250 sq. mi. State government moved from Tuscaloosa to Montgomery Jan. 22, 1846; first capitol burned 1849; present structure erected 1851 and since enlarged; first capitol of the Confederacy, which organized its government here Feb. 4, 1861, moved to Richmond, Va., following year. Heart of cotton-raising section of Land of Dixie.



**CITY HALL;** Montgomery chartered 1837; 60,000 population; 4,950 acres; \$21,000,000 taxable property; city revenues, \$450,000; debt, \$2,525,000; municipal property, \$8,520,000.  
**POST OFFICE;** 22,500,000 pieces of mail last year; receipts, \$136,983; 44% gain in ten years.



COURT HOUSE, \$250,000 marble structure; seat of government of Montgomery County; 95,000 population; taxable values, \$29,058,000, an increase of 45% in ten years; farm products \$8,000,000, including \$2,700,000 in cotton and \$964,000 in cotton seed; 650 miles of county roads, 60% improved at cost of \$2,000,000; 4,019 bridges and culverts; average rainfall 4.39 in. a month; average height above sea, 300 ft.



COURT SQUARE, looking up Dexter Ave to the Capitol; centre of Montgomery; city founded 1817 by Andrew Dexter of Rhode Island and named New Philadelphia; consolidated Dec. 3, 1819, with East Alabama Town, and named after Gen. Richard Montgomery, hero of the Revolution, who fell at Quebec Dec. 31, 1775. The city had steam navigation as early as Oct. 22, 1821, and a 12-mile railroad in 1840.



**FIRST NATIONAL BANK**, largest in city; capital and surplus, \$1,275,000; deposits, \$2,100,000. Montgomery has seven banks with \$5,500,000 deposits, \$11,000,000 resources. Vandiver building at left.



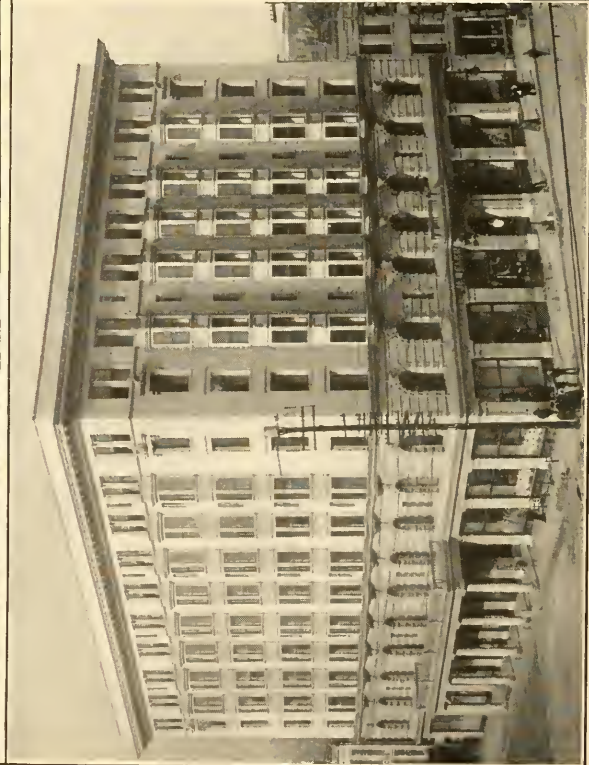
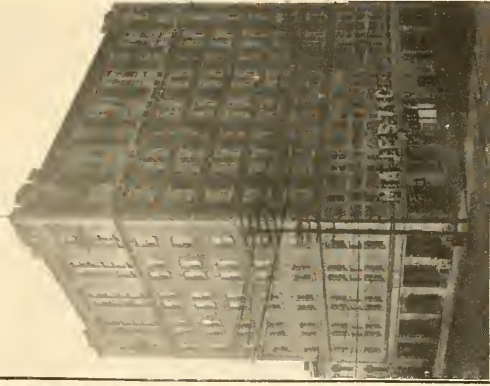
**BELL BUILDING**, erected 1908 at a cost of \$451,000; 308 offices, four large stores and roof garden; 871 windows; 3,000 electric lights; finished in Alabama marble. Owned by N. J. Bell.



ALABAMA RIVER at Montgomery, head of steamboat navigation, 410 miles by water to Gulf of Mexico; the Alabama has a deep, broad channel, good flow of water eleven months in year, reaching, with its navigable tributary, the Coosa River, rich mineral, timber and coal belts, insuring raw materials and fuel at low freight rates; river steamers connect at Mobile with coastwise and trans-Atlantic lines.

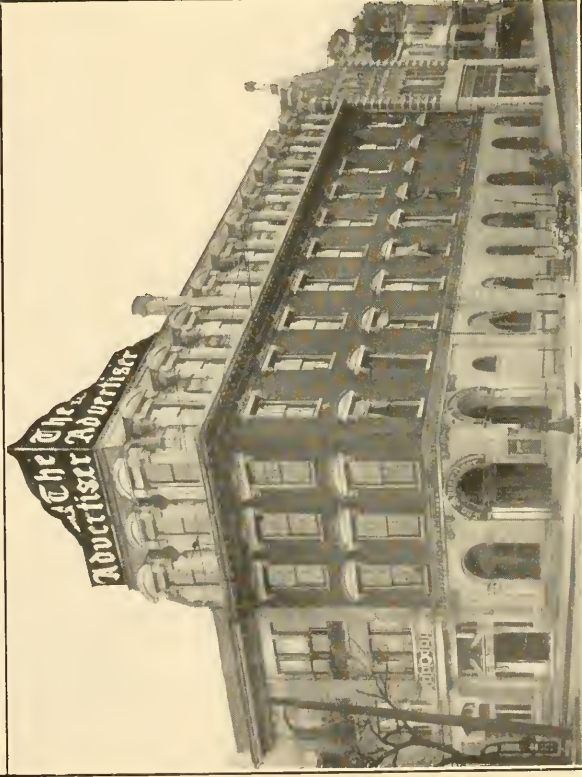


UNION STATION, the hub from which seven railroads radiate, Seaboard Air Line, Central of Georgia, Atlantic Coast Line, Louisville & Nashville, Mobile & Ohio, Western of Alabama and Union Springs & Northern, with 22,853 miles of tracks in 14 states; 45 passenger trains a day; 180 miles from Mobile, 321 from New Orleans, 608 from St. Louis, 747 from Chicago, 1050 miles from New York.



MONTGOMERY Light & Water Power Co. GAY TEAGUE HOTEL, nr. Union Station.  
NEW EXCHANGE HOTEL, Montgomery and Commerce Streets; fine, modern hostelry,  
with 165 suites; private ice plant with capacity of ten tons a day; opened April 7, 1906.





SCHLOSS & KAHN, Wholesale Grocers; typical Montgomery industrial plant; fireproof.  
ADVERTISER BUILDING, Montgomery's oldest newspaper, founded 1828; issued daily;  
Democratic. There are two evening papers, Journal and Times. Leek Funeral Parlors at right.



Imperial Hotel.

Alabama River.

Gay Teague Hotel.

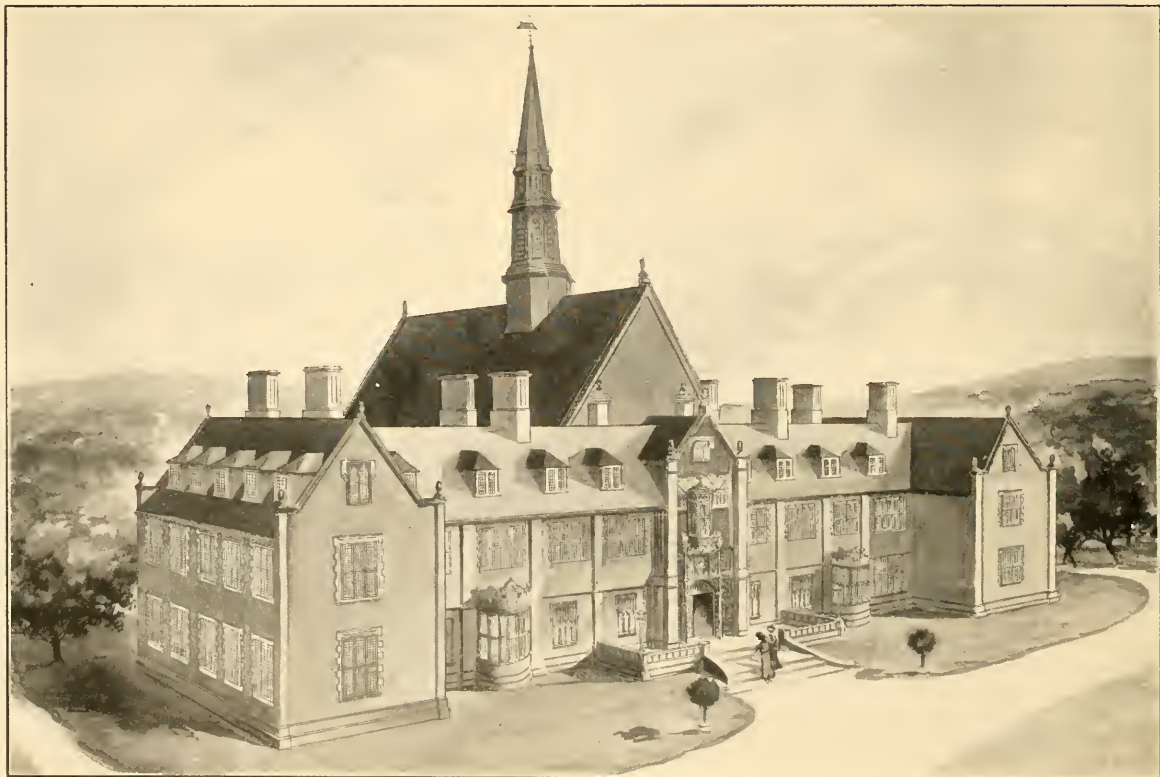
Wholesale District.

Manufactories.

VIEW OF MONTGOMERY from the Alabama River to the State Capitol, showing Court Square, the centre of the city, from which the main thoroughfare is being drawn from driven wells ranging in depth from 250 to 710 feet, with a flow of 5,000,000 gallons a day, distributed through 85 miles of mains; city streets paved with asphalt; remarkably low death rate, 12.47 per thousand; forty miles of electric street railways, with complete transfer system; fifteen country roads



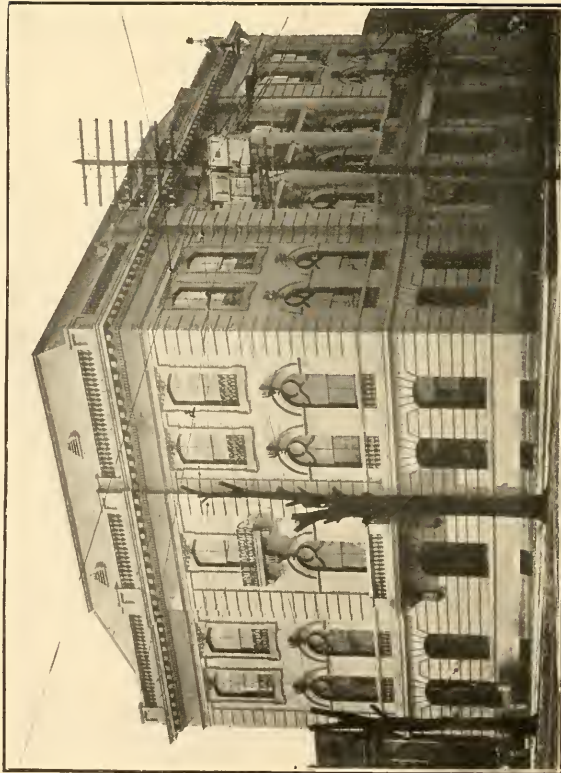
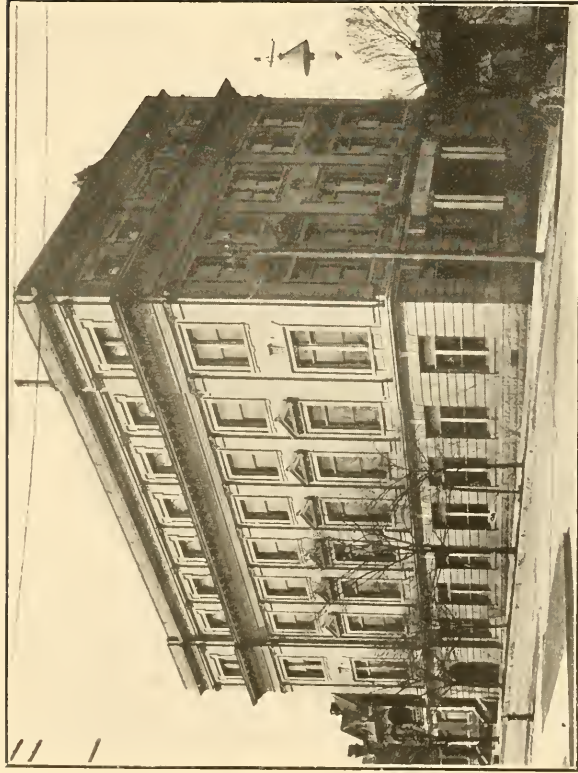
Hotel. First National Bank. City Hall. Montgomery Fair. Retail District. Dexter Avenue. Capito.  
; 25 miles of paved streets; 75 miles unpaved; 82 miles of sewers; \$1,500,000 municipal water plant that earned a profit of \$118,000 last year, the water  
its fine weather, only one day in three cloudy, average temperature 64.8 degrees; over 500 new buildings erected last year at a cost of more than a million  
ity, traversing richest agricultural district in world; city tax rate .01125; city, county and state, .02325; \$120,000,000 business a year in Montgomery.



WOMAN'S COLLEGE OF ALABAMA, to which the citizens of Montgomery gave a fine tract of fifty-seven acres of land beautifully situated, besides a large fund for the buildings. This is the ninth institution of higher learning for women established in Alabama, the Judson Female Institute, founded 1839, with fine buildings, being one of the first schools of collegiate scope for women in the United States.



CENTRAL HIGH SCHOOL. Fifteen schools worth \$500,000. CARNEGIE LIBRARY, \$100,000 structure; 50,000 volumes. SIDNEY LANIER HIGH SCHOOL, \$120,000 building completed 1910, manual training department and laboratories; auditorium seating 800; offices of Board of Education; city has 120 teachers, 4,800 pupils, an increase of 100% in 10 years; 13 private schools, academies and colleges.



MASONIC TEMPLE, headquarters of Grand Lodge of Alabama, Free and Accepted Masons, STANDARD CLUB, imposing and superbly furnished home of one of Montgomery's leading social organizations, which is energetically engaged in the city's commercial advancement.



COUNTRY CLUB OF MONTGOMERY, picturesque home of exclusive social organization and scene of cotillions and other entertainments that are features of the life of the city; quaint and elegantly appointed building surrounded by beautiful grounds with tennis courts, beautiful golf links and many other facilities for beneficial outdoor exercise and amusement, fine old shade trees and well-kept lawns



PICKETT SPRINGS PARK, just outside city limits; maintained by street railway company; pleasure ground with varied amusements.

OAK PARK, hundred acres of beautiful natural forest, kept in excellent condition under the supervision of the Park Commission.

VANDIVER PARK, one of the best race courses in the South; scene of the Alabama State Fair and the Montgomery County Fair.





RIVER SCENES. (1) Tallapoosa which joins the Coosa above Montgomery, forming (2) the Alabama which flows 320 miles into the Mobile. TALLASSEE FALLS, 30 miles above Montgomery, and power house of the Montgomery Light & Water Power Company, where 8,000 horse power is developed for lighting and manufacturing purposes in the city, giving Montgomery the lowest rates in the South for light and power.



CHURCHES (1) Court Street Methodist Episcopal Church. (2) New First Baptist Church, \$100,000 Georgia marble structure. (3) St. John's Episcopal Church. Montgomery's thirty-five churches are well supported and have handsome houses of worship. The Young Men's Christian Association has erected a \$50,000 building, and the Young Women's Christian Association has also acquired a fine home.



ACADEMY OF ST. MARY OF LORETTO, one of the oldest and most important Roman Catholic schools for girls in the South. ST. MARGARET'S HOSPITAL, maintained by the Sisters of Charity. Montgomery also has an Emergency Hospital, the Laura Hill Hospital, Hale Infirmary for Negroes, County Hospital, Salvation Army Emergency Home, Highland Park Sanitarium and Working Woman's Home.



RESIDENCES. (1) McKinney residence, Monroe Street. (2) J. W. Black, South Court Street. (3) C. A. Thigpen, Perry Street. (4) Samuel Sable, South Perry Street. Montgomery has many palatial residences, beautifully situated, the rolling, rising ground affording many advantageous sites for imposing structures which illustrate the wealth and the taste of this thriving and rapidly growing city.



RESIDENCES. (1) W. M. Teague, South Perry Street. (2) Jefferson Davis home, occupied by the President of the Confederacy during the year the city was the Southern Capitol. (3) H. C. Davidson, South Court Street. (4) Winchester residence, Felder Avenue, Cloverdale. Cloverdale is a newly developed residence section on high ground on the eastern limits of the city, near the Methodist College.

SLOGAN SIGN, 2,600 LIGHTS, Presented to the City by THE MONTGOMERY LIGHT & WATER POWER CO.



MONTGOMERY

YOUR OPPORTUNITY













SEP 77



LIBRARY OF CONGRESS



0 014 540 472 1 ●